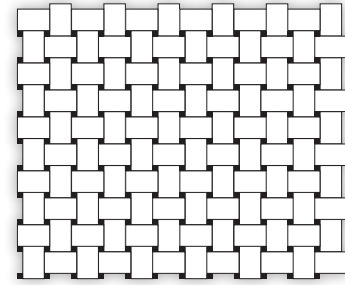


Metropolitan Pattern

Installation Best Practices and Tips.

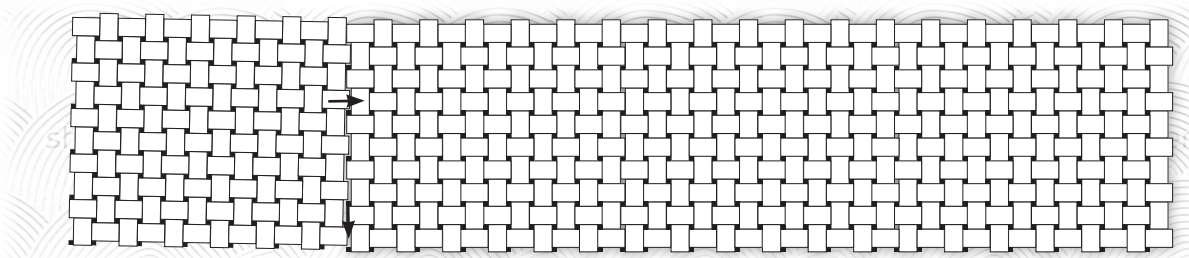
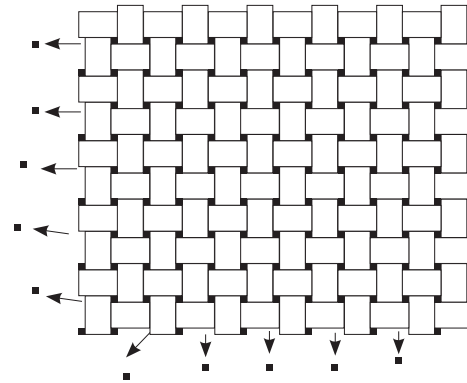


Part Numbers: 16210,16310,16410

The following instructions reviews the best practices found when installing the 'Metropolitan' pattern mosaic from the Chapter 16 'Park Place' collection. Since the 'Metropolitan' pattern mosaic is designed to be installed with virtually no grout joint there are a few extra precautions needed to ensure your installation goes as seamlessly and as easily as possible.

1 Remove Most Dots From Outside Edge

Sometimes the small dots on the outside of the 'Metropolitan' mosaic pattern can obstruct smooth installation of this piece. To ease the tolerances to allow an easier installation we recommend removing some of the dots on the outside edges. **Note: Not all dots need to be removed, generally removing every other dot from the outer edge, as shown, should be more than enough and ensure dot spacing when installing this piece is correct.**



2 Install Mosaic Piece

After the dots needed to ease installation have been removed from the outer edge, install the piece on the desired surface. Make sure that the piece maintains the same orientation during installation. As you are placing the mosaic piece, make sure to allow proper spacing for the missing dots. This may require both inward and downward pressure when butting up the mosaics.

3 Replace Dot Sections

After mosaic piece has been placed in desired installation area and while thin set is still wet place removed dots back into their respective holes. **Note: The darker polished side needs to face outward. You may need to add some thinnest to the back of the dot to ensure proper adhesion.**

